

QUOTE

Survey | Defense |
Autonomous Drone
Solutions



DATE

21th March 2025

QUOTE NO

SGE22032025

SGE UAV Solution Pvt. Ltd.

Satellite Office

Sector 4, Plot 28, Dwarka

New Delhi 110078, India

+91 88511 63142

sgedrones@gmail.com

SGE HQ -

4 Mount Park Road,

London, UK W5 2RP



DEFENCE & BORDER SECURITY

VERSION

UAV OPTION – SGE WILL PROVIDE THE FOLLOWING CUSTOM THERMAL QUADCOPTER OPTIONS BASED ON YOUR REQUIREMENTS –

PRICE	MODEL	CAMERA	BATTERY	ENDURANCE / FLIGHT TIME	TAKE-OFF WEIGHT	MAX ALTITUDE
INR 6,50,000 PACKAGE (EXCLUDING GST) & including 1 Year Warranty + AMC	SGE THERMAL DUAL DRONE CUSTOM COMBO	Axisflying High Resolution 640X512 pixels Microcamera with 1080P RGB Video Recoding: 4K Ultra HD	22.2V 25C 6S 22000mAh Lipo Battery	20 MINS	1750 Grams	3000 M

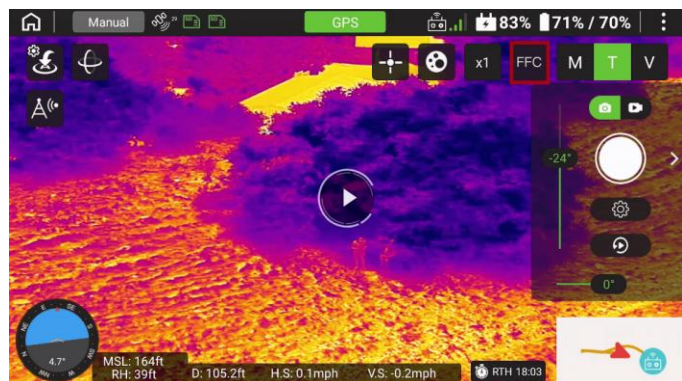
ACCESSORIES INCLUDED – 2 Batteries, 1 set propellers, Rugged Case, Attachment Cables, Charger

ACTUAL PRODUCT IMAGE –



Detailed Parts Specifications

1. Axisflying High Resolution Thermal Imaging Camera For Drone 640*512



The Axisflying High-Resolution Thermal Imaging Camera is designed specifically for FPV (First Person View) drones, providing detailed thermal imaging with a resolution of 640 x 512 pixels. This camera is ideal for applications requiring heat detection, such as search and rescue, security, and inspection tasks. Its compact design allows for easy integration onto various drone models, giving users the advantage of thermal visibility even in low-light or challenging environments.

Features:

- High Thermal Resolution: Provides clear, high-resolution thermal images with 640 x 512 pixels, allowing for detailed heat signature detection.
- Real-Time Output: Offers instant thermal feedback, making it useful for live monitoring and immediate response applications.
- Compact and Lightweight: Designed for easy installation on drones without adding significant weight or affecting flight performance.
- Wide Temperature Detection Range: Capable of capturing a broad range of temperatures, useful in diverse scenarios.
- Durable Construction: Built for reliable operation in varying outdoor environments, making it ideal for field applications.

Applications:

- Search and Rescue Missions: Helps locate heat signatures of individuals or animals in low visibility.
- Security and Surveillance: Enables monitoring of areas and detecting heat variations in real-time.
- Industrial Inspection: Useful for checking the thermal profile of equipment, power lines, or other structures.
- FPV Exploration: Enhances drone capabilities for night flights or low-light environments, providing additional safety and awareness.

2. TAROT 3Axis gimbal

Features:

- Can be used when power on, no need for complicated debugging
- Accurate perception of the attitude change in motor by magnetic encoder
- Seamless shaft technology, great operation experience
- Motor built-in limit to ensure the orderly rotation of the cable

Specifications

- Support thermal imaging camera, FILR
 - Input power supply: 3-6S Li (11-26V)
 - Working current: 30mA (@25V) / 50mA (@12V)
 - Stall current: 350mA (@25V) / 700mA (@12V)
 - Attitude control accuracy: + 0.02 degree
 - Maximum controllable speed
 - Rotation direction (PAN): +- 200 DEG /s
 - Pitch direction (TILT): +- 200 DEG /s
 - Roll direction (ROLL): +- 200 /s
 - Direction of rotation (PAN): +- 125
 - Pitch direction (TILT): -120 DEG to +80 DEG
 - Rolling direction (ROLL): +- 50 degree
 - Support S-Bus/PPM/DSM receiver
 - Working environment temperature: -20 ~+50 DEG C
- Maximum dimensions (with camera): 85mm*100mm*101mm



3. 650 Quadcopter Carbon Fiber Frame Fixed Arm

- BOTTOM CARBON FIBER PLATE
- TOP CARBON FIBER PLATE
- 16 MM SIZE CARBON BOOM FRAME ARMS
- CONTROL BOARD PLATE
- ALUMINIUM C CLAMP 16 MM D
- CARBON MOTOR MOUNT
- LANDING GEAR



4. T Motor Navigator MN3110 700KV

MN3110 T Motors comes with high strength construction and super balance. RC Tiger motor MN3110 is flawless motor upgraded from 2216,2217,2808,2810. T-Motor MN3110 series adopt high standard bearing EZO which was original imported. This improve the use-life of motors. Higher quality of bearing also ensure motor working steady in a low velocity, which contributes to the stability of propeller during the flight. Flexible design to match different relevant parts which can install main props in the current market.

What you are looking at is the most beautiful innovation by T-Motor. This amazing T-Motor Navigator MN3110 700KV Motor offers some of the highest levels of quality and performance in a motor to date.



5. ESC - T Motor Air 40A Esc

Output: Continuous 40A, Burst 60A up to 10 Secs.

Input Voltage: 2-6 cells lithium battery or 5-18 cells NiCd/NIMh battery.

BEC: 3A / 5V (Switch mode).

Max Speed: 210,000rpm for 2 Poles BLM, 70,000rpm for 6 poles BLM, 35,000rpm for 12 poles BLM. (BLM: Brushless Motor)

6. Axisflying 80A+F405/F722 STACK for 13inch FPV Drone 6-8S Input 80A ESC + F05 STACK For 6s

- High Continuous Current: 80A per motor, providing strong power output to handle larger propellers and heavier drone builds.
- 6-8S LiPo Compatibility: Supports high-voltage input for enhanced performance and longer flight times.
- BLHeli_32 Firmware: Equipped with BLHeli_32 firmware, which supports advanced settings like RPM filtering, bidirectional DSHOT, and smooth throttle response.
- Advanced Protection: Includes over-current, over-temperature, and voltage monitoring for safe operation.
- F405/F722 Processor: Option between F405 and F722 processors; both deliver responsive flight control, with the F722 offering enhanced processing power for complex tasks.
- Betaflight OSD: Integrated OSD for in-flight monitoring of voltage, current, and other critical data on the FPV display.
- Multiple UART Ports: Available UART ports for peripherals like GPS, VTX, and Crossfire receivers.
- Gyro: MPU6000 gyro for stable, precise flight performance, even in high-vibration environments.
- Blackbox Logging: Flash memory for flight data logging, enabling post-flight analysis and tuning adjustments.

ESC Specifications :

- Continuous Current: 80A per motor, designed to handle higher loads and provide stability for larger props.
- Input Voltage: Supports 6-8S LiPo batteries, giving it versatility across various power configurations.
- Firmware: BLHeli_32, offering advanced tuning and compatibility with RPM filtering, bidirectional DSHOT, and features like smooth startup and throttle tuning.
- BEC Output: 5V output, which can power flight controllers and other 5V-compatible accessories.
- Protection Features: Over-current protection, voltage monitoring, and built-in temperature control to prevent overheating during intense maneuvers.
- Size and Mounting: Standard 30.5x30.5mm mounting pattern for compatibility with larger frames

Processor:

- F405 Option: STM32F405 processor, an ideal choice for budget-friendly high-performance builds.
- F722 Option: STM32F722 processor, offering greater processing power, supporting more complex filtering and tuning.
- Onboard Memory: Flash memory for Blackbox logging, allowing for post-flight analysis and tuning improvements.
- Betaflight OSD: Real-time monitoring of critical flight data (battery voltage, flight time, current draw, etc.) directly on your FPV feed.
- Gyro: Built-in MPU6000 gyro, known for high-speed, low-noise performance, improving flight smoothness and stability.
- Power Supply: Includes a 5V/10V BEC, which can handle the power needs of a variety of peripherals like cameras, VTXs, GPS units, and LEDs.

UARTs and Connectivity:

- Multiple UART ports allow for easy integration of GPS modules, Crossfire receivers, digital FPV units, and other peripherals.
- I2C and SPI ports for additional sensor integration.
- Compatibility with DJI O3 Air Unit and other digital video transmission systems.
- Mounting and Size: 30.5x30.5mm mounting pattern, designed to fit standard drone frames.

7. Tattu 22.2V 25C 6S 22000mAh GTech Lipo Battery

- The Tattu 22000mAh 6S 22.2V 25C LiPO Battery Pack is engineered for optimal performance in agricultural drones. Designed to match the needs of UAVs like the DJI S1000+, this battery pack combines high capacity with lightweight design, ensuring extended flight times for aerial applications. Integrated with the innovative G-Tech chip, this battery offers seamless communication and efficient charging when used with the G-Tech Eco Smart Charger. Whether you're spraying crops, conducting aerial surveys, or engaging in drone-based mapping, the Tattu 22000mAh battery delivers the reliability and performance you need to get the job done.

Key Features:

- **Compact and Lightweight:** Maintains an impressive balance between power and weight for optimal drone performance.
- **G-Tech Integration:** Smart technology for automatic identification and communication with compatible chargers, ensuring efficient charging cycles.
- **Versatile Charging Options:** Compatible with standard chargers, providing flexibility for your operations.
- **Durable Construction:** Made from premium Japanese and Korean Lithium Polymer materials for superior energy density and extended cycle life.
- **Waterproof and Corrosion Resistant:** IP67 rated, designed to withstand harsh agricultural environments.

Specifications:

- Minimum Capacity: 22000mAh
- Configuration: 6S / 22.2V / 6 Cells
- Discharge Rate: 25C
- Weight: 2460g (±20g)
- Dimensions: 206mm (Length) x 91mm (Width) x 61mm (Height)
- Connector Type: XT90-S Plug
- Protection Class: IP67

Maximize Performance with G-Tech

- The G-Tech chip embedded in the Tattu battery provides advanced features that maximize battery performance. When paired with the Tattu G-Tech Eco Smart Charger, enjoy automatic cell balancing and real-time monitoring to ensure optimal charging and battery health. Experience improved efficiency and extended battery life with smart charging capabilities.



8. T Motor P15*5 Prop-2PCS/PAIR Carbon Fibre Propellers

- T-MOTOR patented design improves the efficiency of longer flights. A special design of a winglet is employed to weaken the vortex and improve efficiency. The downward winglet abates the radial centrifugal tension and deformation quantity. Precise positioning avoids sweepback while the props are working. Push version propeller is special use on the bottom side of a co-axial frame. Improve safety performance with tightened fitted screws and locknut and two more hole sites. the innovative addition of a limit rubber ring to protect the propeller from abrasion and better shockproof competence.

Features:

- Durable plastic construction provides both lightness and rigidity.
- Very strong and lightweight.
- Quick to release, quick to attach
- New design propellers, with greater aerodynamic efficiency, and good lifting capacity.



9. SKYDROID T10 2.4Ghz 10CH Remote Controller with T10 10-Channel Receiver

- This is a SKYDROID T10 2.4Ghz 10CH Remote Controller with T10 10-Channel Receiver. Dual antenna plus dual RF module with integrated control algorithms ensuring reliable communication via full angle high gain antennas the t10 uses the latest in FHSS (Frequency Hopping Spread Spectrum) technology to achieve perfect control and operation
- Parameter adjustments via APP with upgraded traditional OSD to touch panel control (Connected via Bluetooth or USE, also supports S BUS PPM PWM Serial ports and external devices, etc Connects the app via Bluetooth, switching the operation model, adjusting the data of forward and reverse, rudder volume, channel binding, runaway protection value, SBUS, PPM output, and digital baud rate. Providing parameter saving and loading functions
- Specially designed for UAV, Helicopter, Fixed Wing, Multi Rotor or Boat operation In video transmission, Data Link, and control of UAV Integrated with digital video transmission, farthest to.

Features:

- Dual Antenna plus dual RF module with integrated control algorithms ensuring reliable communication via full-angle high antenna.
- Integrated with digital video transmission farthest to 10 km.
- Integrated with data transmission, farthest to 20 KM.
- Parameter adjustment via APP with upgraded traditional OSD to touch panel control.
- Connected via Bluetooth or USB, also supports S.BUS, PPM, PWM serial ports, and external devices.
- Using 2 pieces of 18650 batteries (need buy separately), endurance over 20 hours based on 20 DBm transmit frequency.



PAYMENT TERMS – CASH / BANK TRANSFER/ UPI

DELIVERY DEADLINE – AT THE TIME OF PAYMENT

INCLUDED – REMOTE TECHNICAL SUPPORT, 1 YEAR NON ACCIDENTAL PRODUCT WARRANTY & ANNUAL MAINTAINANCE CONTRACT

ADDITIONAL SERVICES AT EXTRA COST – SPARES, INSURANCE, ON-SITE TECHNICAL SUPPORT

Quotation prepared by: Ankit Sharma

Founder, SGE Limited

+91 8851163142

www.sgeindia.com

Signed by SGE Ltd.



Signed by Recipient:

Signature

Print name

Duly authorised for and on behalf of the Recipient.



सत्यमेव जयते

**GOVERNMENT OF INDIA
MINISTRY OF CORPORATE AFFAIRS**

Central Registration Centre

Certificate of Incorporation

[Pursuant to sub-section (2) of section 7 and sub-section (1) of section 8 of the Companies Act, 2013 (18 of 2013) and rule 18 of the Companies (Incorporation) Rules, 2014]

I hereby certify that SGE UAV SOLUTIONS PRIVATE LIMITED is incorporated on this Thirteenth day of April Two thousand twenty-one under the Companies Act, 2013 (18 of 2013) and that the company is limited by shares.

The Corporate Identity Number of the company is U72900DL2021PTC379956.

The Permanent Account Number (PAN) of the company is **ABFCS8960A** *

The Tax Deduction and Collection Account Number (TAN) of the company is **DELS88199G** *

Given under my hand at Manesar this Thirteenth day of April Two thousand twenty-one .



Digital Signature Certificate
SHIVARAJ C RANJERI

ASST. REGISTRAR OF COMPANIES

For and on behalf of the Jurisdictional Registrar of Companies

Registrar of Companies

Central Registration Centre

Disclaimer: This certificate only evidences incorporation of the company on the basis of documents and declarations of the applicant(s). This certificate is neither a license nor permission to conduct business or solicit deposits or funds from public. Permission of sector regulator is necessary wherever required. Registration status and other details of the company can be verified on www.mca.gov.in

Mailing Address as per record available in Registrar of Companies office:

SGE UAV SOLUTIONS PRIVATE LIMITED

Flat No. B-802, PLOT NO,28, PARIJAT APARTMENT,DWARKA

SECTOR-4,, DELHI, New Delhi, Delhi, India, 110075



* as issued by the Income Tax Department